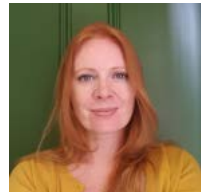


WORKING FOR YOU

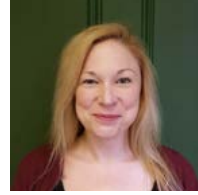
Hopefully you are already familiar with some of our staff but we would like to introduce you to the team.



Debbie Siddle
The Clerk*



Natalie Brett
Assistant Clerk



Stephanie Chapman
Administration Assistant



Sam Thomas
Parish Maintenance



Chris Harrison
Community Warden



Barry Agutter
Highways Coordinator

*The role of The Clerk is to ensure that the Council as a whole conducts its business properly and to provide independent, objective and professional advice and support. The Clerk is the Council's professional officer.

MY WEALDEN

Have you signed up for this free service offered by Wealden District Council? With many services on offer such as notice of planning applications near you and details of bin collections, it's a great resource. Find out more at my.wealden.gov.uk



We were deeply saddened to hear of the passing of Alan Willett who was a valued volunteer for the Parish Council

THANK YOU FOR EVERYTHING.
YOU'LL BE MISSED



Cllr Chris Hardy



Cllr Keith Obbard

WEALDEN DISTRICT COUNCIL also held elections in May. Your elected representatives are:

Wealden District Council are responsible for a number of services provided to the community, such as Planning and Building control, Environmental Health, Waste collection, and Recycling Centres to name a few...

Your District Councillors can be contacted should you have concerns regarding these services

Cllr Chris Hardy (Mardens Hill) cldr.chris.hardy@wealden.gov.uk
Cllr Keith Obbard (Groombridge) cldr.keith.obbard@wealden.gov.uk



Cut out and keep - Useful reporting details

- **East Sussex Highways** – Telephone: 0345 6080193
Email: customer@eastsussexhighways.com or online www.eastsussexhighways.com/report-problem
- **Operation Crackdown** – www.operationcrackdown.org
- **Wealden District Council** - Telephone 01323 443322
Email: info@wealden.gov.uk or online www.wealden.gov.uk
- **East Sussex County Council** - Telephone 0345 608 0190
- **Community Warden** - Telephone 07734392141 or email clerk@withyhamparishcouncil.org.uk

Council meetings are held on the second Monday of every month, except August, at 7.30pm at The Old Station.



DO YOU LOVE WHERE YOU LIVE?
IF SO, HELP US MAKE IT EVEN BETTER. FIND OUT MORE

COMMITTEE VACANCIES

We have three committees that currently have vacancies for members of the public. These are the Rights of Way, Road Safety and Air Traffic Committees. They are important committees covering vital areas within the parish and assisting the parish council in making decisions. If you would be interested in finding out more, please pop into the Parish office or call for an informal chat.

YOUR PARISH COUNCIL

Cllr Diana Kelly: *Chair*
Cllr Paul Watkins: *Vice Chair*

Settlements

Groombridge
Cllr Nick Anderson: *Settlement Chair*
Cllr Gwen Butcher
Cllr Andrew Fane
Cllr Paul Watkins
Cllr Diana Kelly
Cllr Linsey Winter

Withyham/Blackham

Cllr Robin Ashby: *Settlement Chair*
Cllr Keith Obbard
Cllr Richard Thirkell

St John's

Cllr Jill Pardey: *Settlement Chair*
Cllr Marcus Tarling

Clerks to Withyham PC

Debbie Siddle: *The Clerk*
Natalie Brett: *Assistant Clerk*
clerk@withyhamparishcouncil.org.uk

Stephanie Chapman: *Administration*
administration@withyhamparishcouncil.org.uk

Tel: 01892 864557

www.withyhamparishcouncil.org.uk

On our website you can also find copies of our Agendas, Minutes of Council Meetings and Community News updates.

COUNTY / DISTRICT COUNCILLOR CONTACTS:

County Cllr Francis Whetstone
Tel: 01892 771184
cldr.francis.whetstone@eastsussex.gov.uk

District Cllr Chris Hardy
Tel: 01892 771348
cldr.chris.hardy@wealden.gov.uk

District Cllr Keith Obbard
Tel: 07941 578427
cldr.keith.obbard@wealden.gov

OTHER USEFUL CONTACTS

East Sussex County Council
www.eastsussex.gov.uk
Tel 0345 6080190
www.eastsussexhighways.com
For queries about roads & paths, potholes, street lighting, flooded roads.

Wealden District Council
www.wealden.gov.uk
Tel 01323 443333
For queries about planning, recycling, waste, and environmental issues.

Editorial Team: Natalie Brett, Stephanie Chapman, Diana Kelly, Tony Kelly, Debbie Siddle & Beth Harwood.

Withyham Parish Council Autumn 2019 - 14th Issue



WELL DONE AND BEST WISHES TO WILL BAYLEY



Eight years ago, you gave the Parish Council the mandate to support Will Bayley MBE in his endeavours to participate in the 2012 Paralympics. At a public meeting it was agreed to sponsor him £5,000 to enable him to train abroad, especially in China. Why?

Will moved to Groombridge with his family in 1993 and quickly entered into community activities. Unfortunately, he was born with a rare congenital disorder called Arthrogyrosis which affected all four limbs, and was later diagnosed with cancer at the age of 8, necessitating gruelling chemotherapy and a long stay in Great Ormond Street Hospital

However, despite his disabilities, he has committed his life to table tennis and we, as a parish, have followed his endeavours and achievements. Many of us were delighted to witness him winning a silver medal in the London 2012 Summer Paralympics and to watch him win his first Paralympic GOLD medal at the Rio Summer Paralympics (although he did receive a yellow card for jumping on the table tennis table to celebrate!).

Will was appointed Member of the Order of the British Empire (MBE) in the 2017 New Year Honours list for services to table tennis.

In 2019, Will announced that he would be participating in the seventeenth series of Strictly Come Dancing. He is paired with professional dancer Janette Manrara. It is possible that he will have been voted out by the time you read this, but at the moment he is getting a great deal of support from his 'home crowd' and we wish him well.

Will opened our outdoor table tennis table in Groombridge in 2013 where he was challenged by many young people for whom he has become a great example of endeavour and hard work.

We are hoping that he will return again after winning the Strictly 'Glitter ball'!

Di Kelly and WPC



GREEN MATTERS

Withyham Parish Council's response to the call for Climate Change

The Parish Council has resolved to work, where possible, in an environmentally friendly way, by putting actions in place, and approving and following appropriate policies.

We are already:

- Following a Carbon Policy
- Switching to a renewable energy supplier
- Switching street lights to LED lanterns
- Planting trees to replace those that require removal from Parish Council land
- Using recycled paper where possible
- Using eco-friendly cleaning products
- Committed to considering climate and environmental factors when revising the 5-year "Forward for 5" plan

Look out for other actions and do get in touch if you have any ideas to suggest that will make us more environmentally friendly.



ANNUAL PARISH ASSEMBLY



We were delighted to see so many members of the parish at our Annual Parish Assembly where we focused on the activities of Community Groups and the support from services such as Sussex Police and First Responders. Giles York, Chief Constable of Sussex, spoke passionately about local policing to a packed village hall and answered many of your questions both from the stage and whilst enjoying tea and cake with residents.

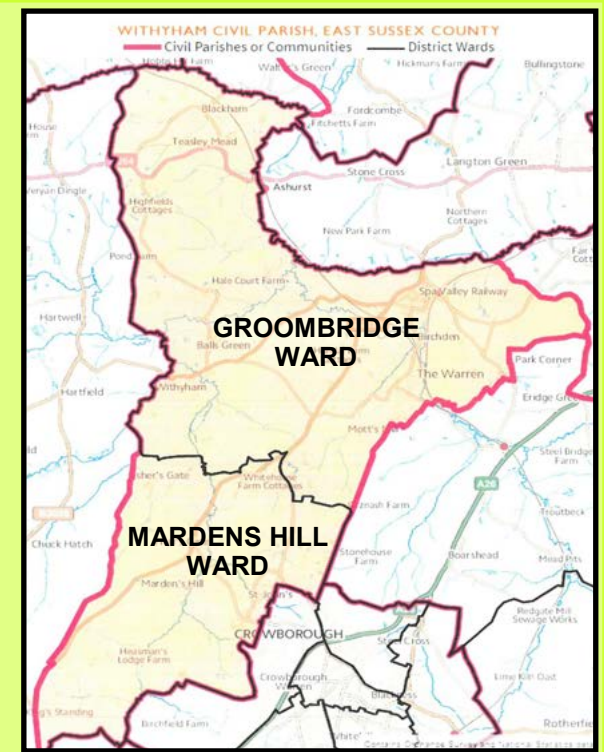
NEW WARDS

As part of the 2018 Boundary Review by the Government which came into effect in 2019, we have changed from the three wards of Blackham/Withyham, St Johns and Groombridge to being Groombridge and Mardens Hill.

You may have noticed the change when you came to vote in the District and Parish elections in May.

This does not affect our Parish overall, only how its electoral areas are identified.

However Withyham Parish Council is keen to preserve the identity of settlements within its boundary in meeting residents' needs.



Withyham Parish Council, The Old Station, Station Road, Groombridge. TN3 9RD.
Tel: 01892 864557 E-mail: clerk@withyhamparishcouncil.org.uk



The month of May 2019 saw the Parish and District elections arrive. Withyham Parish Council was not required to hold an election as the number of nominations did not require one.

We would like to introduce you to your Withyham Parish Councillors. Some are new to the role, some returning to fulfil another term. All working together for the benefit of the community.



Chairman
Cllr Di Kelly
Vice Chairman
Cllr Paul Watkins
Cllr Nick Anderson
Cllr Robin Ashby



Cllr Gwen Butcher
Cllr Andrew Fane
Cllr Keith Obbard
Cllr Jill Pardey



Cllr Marcus Tarling
Cllr Richard Thirkell
Cllr Linsey Winter
Two Vacancies Available
Could it be you?



BUSINESS PLANNING

As you know, we proudly follow a 'Forward for 5', five year parish plan, and it is now time to develop a Business Plan to shape our work, projects and service delivery in the short, medium and long term.

This will enable us to

- Prioritise the most important jobs – Is everything we are currently delivering needed by the Community?
- Minimise the cost of performance – is it delivered in the best and most efficient way?
- Make the best use of our assets and resources

In other words: Where do we want to be? How do we get there?

The business plan will be available publicly on our website and will support the development of our new Parish Plan in 2020 – look for invitations to contribute.

Rights of Way Committee

An Advisory Committee tasked with monitoring the Rights of Way within our Parish in order to keep them open and accessible to all. We do this in liaison with East Sussex County Council Rights of Way team.

Road Safety Committee

While the Highways Authority remains East Sussex County Council, this committee advises the Council on projects in the parish that will enhance road safety. These would be delivered in partnership with East Sussex County Council.

Air Traffic Committee

An advisory committee that communicates the views and concerns of residents of Withyham parish relating to the effect of aircraft traffic levels on residents to District, County, and Central Government levels.

Our Committees. Councillor Membership colour coded as below.

Agendas for all our meetings are posted in our notice boards (keep an eye out for colour coded agendas linked to the colours below). We welcome members of the public to our meetings where there is a 10-minute opportunity to speak on an agenda item or about something that maybe of interest to council. We are always delighted to see residents in attendance. The full calendar of dates for meetings can be found on our website.

Council Meetings

Full Council meetings are held on the second Monday of each month (except in August). Discussions and decisions are made on agenda items at these meetings, and they are the driving force behind the actions of the Council.

Finance & Administration Committee

The Finance and Administration Committee oversees all financial, health and safety and administrative matters arising within the Council. These meetings also guide the actions of the Council.

Planning Committee

Did you know that Withyham Parish Council is a Planning Consultee for applications within our boundary? We always recommend submitting your comments to Wealden District Council who are the Planning Authority but do feel free to come along to our meetings to share your views.

WORKING & LIVING TOGETHER IN OUR PARISH



GRANTS

So far this year we have been able and delighted to support Ashdown Forest Conservators, Blackham Village Hall, Citizens Advice Bureau, The Samaritans, Clued Up Info, Groombridge Tennis Club, All Saints Blackham, The Air Ambulance, St John's Church and St Michael's Primary School. We still have a small amount left in our Grants budget and details of the criteria and how to apply are available on our website or via the office.

COMMUNITY CAFÉ

Gail Clarkson, one of the founder members and the lynch pin for organising the Community Café, is folding up her apron and handing it on to Stephanie Chapman. Who is contactable at the Parish Office and will be co-ordinating the diary and managing the Community Café boxes.

Thank you, Gail, for all your hard work in making this event such a success.



BALLS GREEN COMMUNITY SPACE



We are looking for residents who would be willing to do the occasional weeding and pruning of the flowers and borders of our community space at Balls Green. If you would be interested in volunteering please contact the office.

AMBLERS

Our Amblers walking group continues to go from strength to strength. If you would like to join an Amble please do come along.



COMMUNITY SPEEDWATCH

We are looking for more members of the community to join our Speed Watch team. With various locations in the Parish and support from Sussex Police, Speed Watch is making a difference.

BONFIRES

Wealden District Council recommend that residents do not have bonfires. Residential bonfires attract many complaints and are a source of air pollution. We recommend that garden waste is composted or taken to a household waste site or placed into your garden waste bin.

However, there are no byelaws preventing bonfires so if you decide to have one, you must not cause a statutory nuisance to neighbours or cause anti-social behaviour. A one-off bonfire is unlikely to result in formal action, but this may change if they occur on a regular basis.

If you do have a bonfire, we urge you to be extremely careful and follow the recommendations below. This should help prevent any complaints.



- Always warn your neighbours in advance
- Burn during low wind conditions
- Burn in the evening when windows are closed
- Burn when washing has been taken in
- Only burn dry material
- Burn as far away from your neighbours as possible
- If a neighbour's house has become engulfed by your smoke, put out your bonfire immediately.



GROOMBRIDGE PLAYGROUND RENEWAL

The Groombridge Playground Renewal working group have been hard at work with the design of the replacement playground in Groombridge. The official tender process should begin shortly, with fundraising to follow. There is still time to get involved if you are interested. Please contact the office.

HEDGES AND THE HIGHWAY

Does your property border a footpath, verge or road? Please take a moment to have a look.

Hedges and trees that encroach over footpaths, verges or roads cause a dangerous obstruction, even making pavements impassable for disabled residents. East Sussex County Council can request these are cut back. They will charge residents for doing it on their behalf.



CONSIDERATE PARKING

Our Community Warden is very pleased with residents' responses to the "advisory ticket" which he has used to point out illegal parking on pavements, junctions and double yellow lines. On behalf of residents using prams and mobility aids, thank you!



Council meetings are held on the second Monday of every month, except August, at 7.30pm at The Old Station.

Withyham Parish Council, The Old Station, Station Road, Groombridge. TN3 9RD.
Tel: 01892 864557 E-mail: clerk@withyhamparishcouncil.org.uk



Are you on Facebook? We have our own Facebook page, which, alongside our website, contains useful information on your parish. Have a look, we always welcome your comments.

www.facebook.co.uk/WithyhamParishCouncil www.withyhamparishcouncil.org.uk

