

## POLICING AND SAFETY



**Speed watch** is a community-based initiative.

The scheme aims to:



- Increase drivers' perception of the risks from speeding and encourage them to slow down
- reduce collisions and the severity of injuries on local roads
- improve the quality of life for local communities.

It involves groups of not less than two or more than four members of the community. They are trained in the operation of a Radar Speed Gun and will position themselves in places which have been risk assessed by the police. Volunteering is a great way to meet new people, to help the community and gain new skills. Where Speed Watch is being run effectively the volunteers enjoy the role and find it both rewarding and sociable. If you would be interested in coming along to a session to find out more get in touch!

**Sussex Police**  
Serving Sussex

**Sign up to  
"In The Know"**

Residents are being urged to sign up to Sussex Police "In The Know" email subscription service by visiting the dedicated "In The Know" website. [www.intheknow.community](http://www.intheknow.community) Once you've joined the In The Know Community you will get updates from your local police and Our Watch. It's specific to your interests and local area. Information covers such areas as Our Watch, Farm Watch and Operation Blitz (Antisocial Behaviour).



Non-urgent reports can also be made to the police on 101 or by emailing [101@sussex.pnn.police.uk](mailto:101@sussex.pnn.police.uk)

**Operation crackdown** is a very useful contact for reporting anti-social driving and abandoned vehicles. With anti-social driving, such as speeding, it helps the police build a picture for a local area. If a problem is persistent and a significant number of reports are being received the Police have the option of sending a patrol to review the situation. [www.operationcrackdown.org](http://www.operationcrackdown.org)



### Office Opening Hours.

From 1<sup>st</sup> September 2018 the Parish Office will be changing its opening hours. The new opening hours are:

Monday 12.00 – 5.00pm  
Tuesday 9.30 – 12.00  
Wednesday 9.30 – 12.00\*  
Thursday 9.30 – 12.00  
Friday 9.30 – 12.00



\*During School Holidays the Parish Office will be closed on Wednesdays.

## YOUR PARISH COUNCIL

Cllr Diana Kelly: *Chair*  
Cllr Stephen Whittaker: *Vice Chair*



### WARDS

#### Groombridge

Cllr Nick Anderson  
Cllr Gwen Butcher  
Cllr Andrew Fane  
Cllr Diana Kelly  
Cllr Linsey Winter  
Vacancy

#### Withyham/Blackham

Cllr Robin Ashby  
Cllr Jonathan Kelly  
Cllr Keith Obbard: *Ward Chair*  
Cllr Stephen Whittaker

#### St John's

Cllr Jane Clare  
Cllr Jill Pardey: *Ward Chair*  
Cllr Marcus Tarling

#### Withyham Parish Council Office:

Debbie Siddle - Clerk  
Natalie Brett - Assistant Clerk  
Liz Winder - Admin Assistant  
Tel: 01892 864557  
[clerk@withyhamparishcouncil.org.uk](mailto:clerk@withyhamparishcouncil.org.uk)  
[www.withyhamparishcouncil.org.uk](http://www.withyhamparishcouncil.org.uk)

**On our website you can also find copies of our Agendas, Minutes of Council Meetings and Community News updates.**

### COUNTY / DISTRICT COUNCILLOR CONTACTS:

County Cllr Francis Whetstone  
Tel: 01892 771184  
[cllr.francis.whetstone@eastsussex.gov.uk](mailto:cllr.francis.whetstone@eastsussex.gov.uk)

District Cllr Johanna Howell  
Tel: 01892 750141  
[cllr.johanna.howell@wealden.gov.uk](mailto:cllr.johanna.howell@wealden.gov.uk)

District Cllr William Rutherford  
Tel: 01892 750141  
[cllr.william.rutherford@wealden.gov.uk](mailto:cllr.william.rutherford@wealden.gov.uk)

**Editorial Team:** Natalie Brett, Beth Harwood, Diana Kelly, Tony Kelly, Debbie Siddle, & Liz Winder.

# Withyham Parish Council Autumn 2018 - 13th Issue



## HELLO - WE WORK FOR YOU!

### Administration Assistant

Liz Winder

My background has always been administration and I was lucky enough to join the team here at the Parish Council as the new Administration Assistant. I am married, have two children aged 6 and 4 and live in Maresfield. I have already received a warm welcome from residents and members of the Parish Council and am excited to be part of the Parish Council team. I look forward to being a great support to the Clerk and Assistant Clerk.



NEW FACE

### Highways Coordinator

Barry Agutter

Although the Parish Council has no responsibility for highway matters many of the questions, queries and complaints that come into the office are highway related. The co-ordinator role is a new volunteer role that has been created to assist the Parish Council in understanding and explaining highway issues, giving advice to councillors and following up cases reported to East Sussex County Council and their contractor or East Sussex Highways.

I am a member of the Parish Council's Road Safety Committee and am involved in the Strengthening Local Relations meetings where we discuss issues with East Sussex County Council representatives and members of the contractor East Sussex Highways. I come to this post after retiring from working for 40 years at a senior level with a road construction and material company. Having lived in Groombridge for 30 years, I know the majority of the roads in the Parish very well. I would urge anyone who comes across a problem to report it to East Sussex Highways (contact details pg 4).

### Community Warden Report

Chris Harrison

In addition to engaging with the community I have spent some time monitoring traffic at St Michael's School (Withyham), Station Road (Groombridge) and outside of the Village Hall to log speeding, inappropriate and dangerous parking and other concerns to ensure safety of the public. All of these findings have been passed to the Road Safety Committee. The Council has also asked me to monitor traffic at the other schools in the Parish such as St Johns Primary School and St Thomas's. I have received several complaints stating that Footpath 33 is overgrown and difficult to get past and the issue has been reported to ESCC Rights of Way. I recently attended the Community Café and it was great to see so many residents there. I can be contacted on 07734 392141 or by email at [clerk@withyhamparishcouncil.org.uk](mailto:clerk@withyhamparishcouncil.org.uk)



We are delighted to announce that Cllr Stephen Whittaker who has been a Parish Councillor for almost 2 years has taken on the role of Vice Chair of the Council and Chair of Finance and Administration Committee.



Members of the public are welcome to speak at the beginning of any of our public meetings on an agenda item. You will find our agendas on notice boards in the Parish.



**WELCOME FROM THE CHAIR**

Are you new to the parish? Have you wanted to know how to contact service providers but not had time to investigate contact details?

We have now put together a Welcome Card for new residents to introduce them to the Parish and included in the card, information and links to relevant authorities, local schools, churches and organisations.



Councillors will be identifying new residents in their area and introducing themselves and the Welcome Card, but if you are aware of new neighbours then do please contact the clerks so that we don't miss giving them a welcome.

As you can see we have so many people to welcome to our team, many of whom are volunteers. They are our stalwarts providing skills and experience built up during their other roles.

We are currently looking for a volunteer to co-ordinate their work – a role which initially may take an investment of one day a week working alongside the team in the parish office.

If you would like more details about this do please contact the clerks.

Happy Reading!  
Di Kelly



Are you on Facebook? We have our own Facebook page, which, alongside our newly updated website, contains useful information on your parish. Have a look. We always welcome your comments. [www.facebook.co.uk/WithyhamParishCouncil](http://www.facebook.co.uk/WithyhamParishCouncil) [www.withyhamparishcouncil.org.uk](http://www.withyhamparishcouncil.org.uk)

## Cut out and keep - Useful reporting details

- **East Sussex Highways** - Telephone: 0345 6080193 Email: [customer@eastsussexhighways.com](mailto:customer@eastsussexhighways.com) or online [www.eastsussexhighways.com/report-problem](http://www.eastsussexhighways.com/report-problem)
- **East Sussex County Council** - Telephone 0345 608 0190
- **Operation Crackdown** - [www.operationcrackdown.org](http://www.operationcrackdown.org)
- **Wealden District Council** - Telephone 01323 443322 Email: [info@wealden.gov.uk](mailto:info@wealden.gov.uk) or online [www.wealden.gov.uk](http://www.wealden.gov.uk)
- **Community Warden** - Telephone 07734 392141 or email [clerk@withyhamparishcouncil.org.uk](mailto:clerk@withyhamparishcouncil.org.uk)

Council meetings are held on the second Monday of every month, except August, at 7.30pm at The Parish Office. A Councillor will be at the monthly Saturday Community Cafés to discuss any topics or ideas.

**Withyham Parish Council, The Old Station, Station Road, Groombridge. TN3 9RD.**  
Tel: 01892 864557 E-mail: [clerk@withyhamparishcouncil.org.uk](mailto:clerk@withyhamparishcouncil.org.uk)

## We did it!



### A264 Speed reduction and safety improvements

Following on from the well-attended information meeting at Blackham Village hall where residents were advised of East Sussex County Council's proposals for a speed limit reduction on the Blackham section of the A264, we are delighted to advise that there were no objections received by East Sussex Highways. Now the first parts of the works have begun! We look forward to the full scheme developing over the coming months. The Parish Council is delighted that after many long years this stretch of road is being made safer for drivers and our residents.

WE HAVE SOME  
EXCITING  
NEWS



### Exciting new volunteer role at Withyham Parish Council

**Are you looking for a new challenge? Would you like to make a huge difference in your community? Do you have some time free in the week?**

**Withyham Parish Council** has an exciting new volunteer role. As Volunteer Coordinator, you will help take forward volunteering across the Parish, by recruiting volunteers to work on a number of fun and rewarding activities that help make the Parish a great place to live.

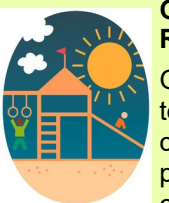
We are ideally looking for someone who enjoys working with people; is well-organised with good IT skills and who is able to commit to a few hours a week. You will be based in the friendly and busy Parish Office in Groombridge alongside the Parish Clerks.

If you are interested in finding out more about this great volunteering opportunity, please contact the Parish Clerk on [clerk@withyhamparishcouncil.org.uk](mailto:clerk@withyhamparishcouncil.org.uk) or 01892 864557.



We were very sad to say good bye to Cllr Anne Jenkins who has moved away from the Parish to start a new life in Wales.

Cllr Jenkins was also the Vice Chair of the Council and Chair of the Finance and Administration Committee. She played a significant role within the Parish Council her dedication was greatly appreciated and she will be considerably missed by the Clerks and her fellow Councillors.



### Groombridge Playground Renewal (GPR)

GPR is an exciting community project to renew the current play area in the community recreation ground. Monthly public meetings are held for all community members to join, to assist and to keep up to date on the progress.

Following the feedback from the local children of all ages at various community events we are at the final planning stage, once the plans are agreed by the GPR community group, WPC and Trustees who own the land we will be progressing the fundraising through, grants, sponsors and events. If you would like to be a part of this exciting project please follow us on Facebook 'Groombridge Playground Renewal' or contact [groombridgeplayground@gmail.com](mailto:groombridgeplayground@gmail.com)



Who we support

### Our Grants - From the Parish Council

In addition to grants given this year to the Samaritans, Ashdown Forest Conservators, Blackham Village Hall, Groombridge Village Hall, St Johns' Church, St Thomas' Church, Groombridge Sports Ground Association and Groombridge Preschool, we are delighted to have given our final grant for this year to Clued-up.

Clued Up is an information shop based in Crowborough for young people much like Citizens Advice Bureau. They see more than 1,000 people aged from 11 to 25 every year and deal with a range of problems, from mental health, bullying, relationship concerns, sexual health, problems at home, drug use and money issues. The service is free, confidential and usually 1 to 1. To get in touch please call them on 01892 661990 or E-mail: [cluedupinfo@yahoo.co.uk](mailto:cluedupinfo@yahoo.co.uk)

*Grant applications can still be received by the Parish Council, however funds will not be available until the next financial year 2019/20*

clued  
UP. INFO



### We need you!

We have a vacancy for a councillor in Groombridge.

- Would you like to help your community?
- Do you have any spare time to offer?
- Have you considered being a volunteer?
- Do you enjoy working with others?

if so, please consider joining the Parish Council. For more information contact the clerk on 01892 864557 or email [clerk@withyhamparishcouncil.org.uk](mailto:clerk@withyhamparishcouncil.org.uk)



### Ambles & Community Café

The Parish Ambles walking group is going from strength to strength. The ambles take place once a month and new walkers are always welcome. Our motto is "Walking at a relaxed pace for pleasure".

The monthly Community Café, which takes place on the same day as the amble, continues to be a great success. Each café is run by a group or charity to raise funds for their cause. These are very popular, and availability is often limited, in fact we only have four dates available for 2019. If you would be interested in your club, society or charity running a café please do get in touch.

As a Community Café everyone is welcome to attend. A Parish Councillor is also on hand to answer questions and to explain our work. Do come along for a coffee or tea between 10am and 12 noon when refreshments are served, and you can chat to friends. We would love to see you!

**Withyham Parish Council always aims to support residents on matters affecting their lives in the Parish but would encourage reporting directly to the relevant authority where possible.**



### Wealden District Council Street Scene - Chris Lambeth

We are delighted to introduce the Street Scene Officer for our Parish, Chris Lambeth. Chris works within the Street Scene Department of Wealden District Council and often works closely with the Parish Office to resolve issues in the Parish.

**Chris can assist with Fly Tipping, Abandoned Vehicles, Littering, Dog Fouling and can facilitate dealing with Dead Animals on the road**

One area that Chris has been instrumental in assisting us is fly tipping of non-recyclable waste that has recently been appearing at the Recycling Centre in Groombridge. Where evidence is found, contact is made and action is taken where appropriate. This can range from advice to prosecution. The public's assistance in reporting instances of fly tipping is invaluable.

Chris is also able to assist with abandoned vehicles. These are classed as vehicles that are untaxed and either unsecure, in poor condition or unroadworthy. However, in the first instance these should be reported to operation crackdown at [www.operationcrackdown.org](http://www.operationcrackdown.org)

The street scene team will investigate both littering and dog fouling issues and where the appropriate evidence is available, such as witness statements, will take further action by as issuing warning letters or fixed penalty notices as appropriate.

It is important for these issues to be reported to the Street Scene Team to allow them to investigate.

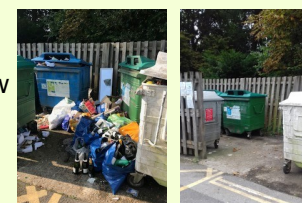
Street Scene Officers have no powers to deal with parking or obstruction issues with vehicles. These should be reported to the police using the non-emergency number 101.

If you would like to report any issues in the areas detail above, please email [street.scene@wealden.gov.uk](mailto:street.scene@wealden.gov.uk) or call 01892 602735

WHO  
WE WORK  
WITH

### Groombridge Recycling Centre

Wealden District Council's recycling centre in Groombridge Village Hall car park is being misused by people dumping all types of general rubbish in the entrance to the recycling bins. This is a recycling centre for glass, paper, tins etc, and is **not** for general waste – there is a waste centre at Crowborough. Missed recycling collections by Kier have exacerbated the problem but Wealden District Council have been working with Kier to ensure the recyclables are cleared and the Street Scene Officers have been following up any fly tipping. These pictures show the unwelcome sight of fly tipping of household rubbish and the difference when it is used properly.



### Missed Bin Collections

Wealden District Council is responsible for waste and recycling bin collections but their contractor, Kier, continues to miss bin collections in the Parish. WDC levels a financial penalty on Kier for their under-performance but can only charge Kier for their failures if they know about them. It is very important that you inform WDC if your bin is not being emptied. Your reports can be made via the website [www.wealden.gov.uk](http://www.wealden.gov.uk) or by telephone to WDC 01892 653311 but **MUST** be made within 24 hours of the missed collection.



### East Sussex County Council Grass Cutting Changes for 2018

To make the required £400,000 budget savings, East Sussex County Council has reduced the number of urban grass cuts from six cuts to two cuts during 2018. (Urban grass is classified as being verges which are on roads which have a speed limit of 40 mph or less, unless otherwise agreed by the county council).

Withyham Parish Council was offered the opportunity to fund additional urban cuts; however this was made after the Parish Council had set its precept. Without the appropriate notice the Parish Council was unable to even consider this as budgets had already been set.

East Sussex County Council's rural grass cutting is not affected by these changes and these will continue to be cut by a one metre swathe twice a year along these verges. Residents who are concerned about grass causing an obstruction to the highway should report this to East Sussex Highways for action.

If you notice problems on the Highway such as potholes or obstructions from vegetation, please report these to East Sussex Highways. The Highways Steward will then be able to inspect the problem and action any works necessary. Contact details on pg 4.

 2 hours	 28 days
Potholes which are greater than 100mm deep and at least 300mm wide in all directions are made safe within 2 hours	Potholes which are greater than 40mm deep and less than 59mm deep and at least 300mm in all directions are made safe or repaired within 28 days
 5 days	Potholes which are greater than 60mm deep and less than 99mm deep and at least 300mm in all directions are made safe or repaired within 5 days

Council meetings are held on the second Monday of every month, except August, at 7.30pm at The Parish Office.